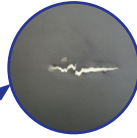


# CleanPatch®

## Medical surface repair patch for hospital beds and stretchers

CleanPatch® is an FDA and Health Canada registered Class I medical device.



	✓ Use CleanPatch®	✗ Do Not Use CleanPatch®
<b>Mattress Age and Condition</b>	Usable - within expected lifespan	No longer suitable for use as per facility protocol
<b>Appearance</b>	No signs of fluid ingress or contamination	Mattress cover is stained or warped
<b>Fluid Penetration</b>	Passes the paper towel test	Fails the paper towel test
<b>Size of Damage</b>	Each area of damage should be covered with a single patch	We do not recommend layering patches to cover a single area

**The Paper Towel Test** may be used to assess if fluid has penetrated the inner core.

Fold a paper towel into 4 layers and press down over the damaged area. If the paper appears wet, the mattress has failed the test.



### IMPORTANT

- ✓ Mattresses should be inspected for damage during every cleaning
- ✓ CleanPatch® works best on polyurethane, nylon or vinyl materials, and may not adhere properly to some coated surfaces
- ✓ Always assess the damage and look for any signs of contamination such as staining or warping
- ✓ Measure the damage and use the correct size of CleanPatch® to ensure proper adhesion
- ✓ Review and follow the instructions for use on the package insert
- ✓ If the patch lifts or peels, remove and re-apply immediately with a new CleanPatch®
- ✓ Do not cut CleanPatch® to maintain product integrity

**STEP 1: Assess the damage to determine if CleanPatch® is appropriate (see over)**

**STEP 2: Measure the damage to determine which size of CleanPatch® to use**

Product #	Shape	Shape	Damage Size*
#11003	Round	2 inch (5 cm)	Up to 1/2 inch (1.3 cm)
#10003	Square	3.5 x 3.5 inch (9 x 9 cm)	Up to 2 inches (5 cm)
#12003	Rectangle	3.5 x 6 inch (9 x 15 cm)	Up to 4 inches (10 cm)
#18003	Mixed Box	2 inch (5 ea.)	See references above
		3.5 inch (3 ea.)	
		3.5 X 6 inch (2 ea.)	

\*There must be at least 1/2 inch margin around the damage to ensure adhesion

**STEP 3: Apply CleanPatch®**



1 Identify and measure damaged area.



2 Clean mattress as per hospital protocol. Let dry.



3 Remove white backing from CleanPatch.



4 Hold edges of patch and position it over the damage.



5 Apply firm pressure to the patch, especially around the edges.



6 Slowly remove the clear top liner, pulling from → to ●



7 Smooth CleanPatch from center outwards. For best results wait 1 minute.



8 Clean the patch and surrounding area as per hospital protocol.

**STEP 4: Track the repair. Write your initials and date on the patch with a non-toxic Sharpie® marker**



For more information visit  
[www.solutionsdesignedforhealthcare.com/cleanpatch](http://www.solutionsdesignedforhealthcare.com/cleanpatch)

CLEANPatch®